

Word of the Day

Spring Term 2024

Week 38 – 1st July 2024



This Week's Words

Grasshopper

tear
office
spare
chipped
lift

Shinobi

tolerate
mutter
fixation
unveil

VN VOCABULARY

Grasshopper Word of the Day

Word of the Day: picnic
(pic-nic)

Word Class: (verb / noun)

Definition: If you tear paper, cloth, or another material, or if it tears, you pull it into two pieces or you pull it so that a hole appears in it.

Phrases:

Synonym: word
word

Antonym: word
word

Rhyme: word
word

Link Word: word
word

Phrase Number One: The was a hole in Freddie's new school picnic.

Phrase Number Two:

Illustration: A picnic basket with a red apple and a sandwich.

Shinobi Word of the Day

Word of the Day: tear
(tear)

Word Class: (verb / noun)

Definition: If you tear paper, cloth, or another material, or if it tears, you pull it into two pieces or you pull it so that a hole appears in it.

Phrases:

Synonym: word
word

Antonym: word
word

Prefix / Suffix: word
word

Link Word: word
word

Phrase Number One: The was a tear in Freddie's new school book.

Phrase Number Two:

Illustration: An open book with a tear in the paper.

'Words unlock the doors to a world of understanding...'

This Week's Words

Grasshopper

hunger

leak

juggle

melt

knock

Shinobi

frail

introduce

loyal

peculiar

repulsive



VOCABULARY NINJA

Grasshopper (Tier I)

hunger

leak

juggle

melt

knock



VOCABULARY NINJA

Shinobi (Tier 2)

frail

introduce

loyal

peculiar

repulsive



VOCABULARY NINJA



Grasshopper Word of the Day

Word of the Day:

Pronunciation / Syllables

hunger
(hun-ger)

Word Class
(noun)

Definition:

Hunger is the feeling of weakness or discomfort that you get when you need something to eat.



Jamie had a **hunger** for burgers.

Synonym:

craving
starvation

Antonym:

fullness
satiation

Prefix / Suffix:

-ed
-y

Rhyme:

younger

Link Word:

pangs
desperately



Grasshopper Word of the Day

Word of the Day:

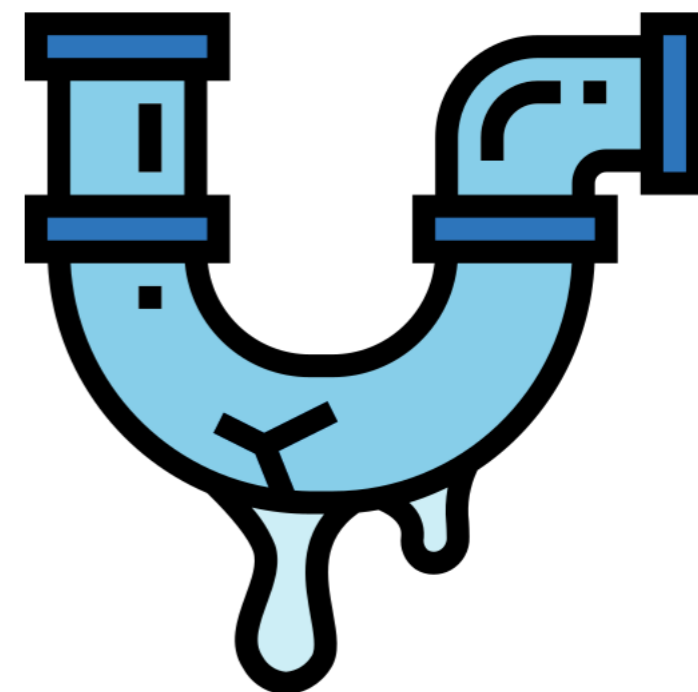
Pronunciation / Syllables

leak
(leak)

Word Class
(noun / verb)

Definition:

If a container leaks, there is a hole or crack in it which lets a substance such as liquid or gas escape.



The class were distracted by a **leak** in the pipe.

Synonym:

crack

hole

Antonym:

Prefix / Suffix:

-age

-ing

Rhyme:

week

seek

Link Word:

roof

out



Grasshopper Word of the Day

Word of the Day:

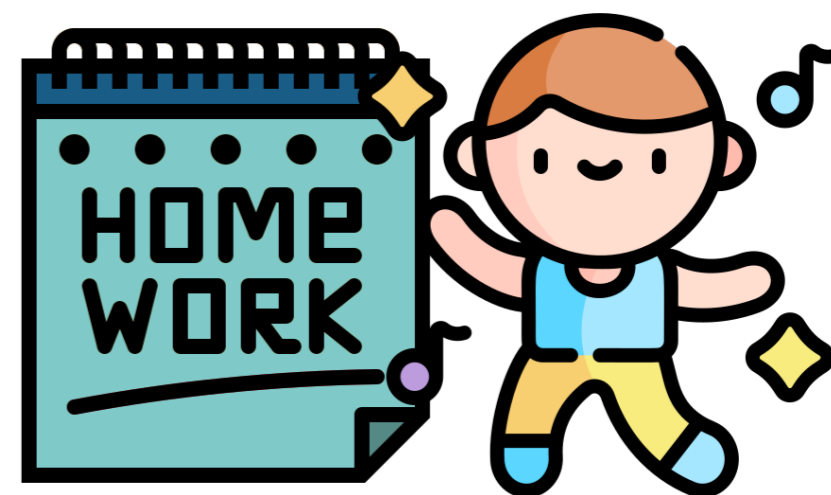
Pronunciation / Syllables

juggle
(jug-gle)

Word Class
(verb)

Definition:

If you juggle lots of different things, for example your work and your family, you try to give enough time or attention to all of them.



Kelsie had to **juggle** her homework and dancing lessons.

Synonym:

alter

shuffle

Antonym:

neglect

reveal

Prefix / Suffix:

-er

-ed

Rhyme:

struggle

smuggle

Link Word:

time

demands



Grasshopper Word of the Day

Word of the Day:

Pronunciation / Syllables

melt
(*melt*)

Word Class
(verb)

Definition:

When a solid substance melts or when you melt it, it changes to a liquid, usually because it has been heated.



The class watched the ice cubes **melt** in the sun.

Synonym:

disappear

fade

Antonym:

appear

freeze

Prefix / Suffix:

re-

-ing

Rhyme:

felt

belt

Link Word:

snow

butter



Grasshopper Word of the Day

Word of the Day:

Pronunciation / Syllables

knock
(*knock*)

Word Class
(verb / noun)

Definition:

If you knock on something such as a door or window, you hit it, usually several times, to attract someone's attention.



Asher **knocked** on the headteacher's door.

Synonym:

hammer

blow

Antonym:

Prefix / Suffix:

-ing

-ed

Rhyme:

stock

block

Link Word:

window

hard



Shinobi Word of the Day

Word of the Day:

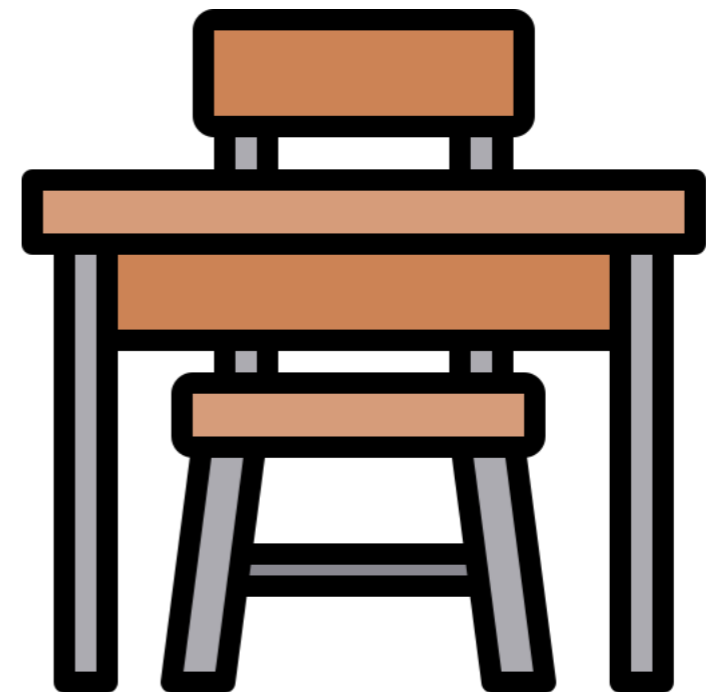
Pronunciation / Syllables

frail
(frail)

Word Class
(adjective)

Definition:

Something that is frail is easily broken or damaged.



Mrs Peterson noticed how **frail** her desk had become.

Synonym:

feeble

fragile

Antonym:

firm

solid

Prefix / Suffix:

-est

Rhyme:

scale

mail

Link Word:

increasingly

extremely



Shinobi Word of the Day

Word of the Day: **introduce**

Word Class
(verb)

Pronunciation / Syllables

(*in-tro-duce*)

Definition:

To introduce something means to cause it to enter a place or exist in a system for the first time.



Mr Fleck **introduced** the new book.

Synonym:

announce

propose

Antonym:

erase

finish

Prefix / Suffix:

re-

-d

Rhyme:

produce

profuse

Link Word:

formally

briefly



Shinobi Word of the Day

Word of the Day:

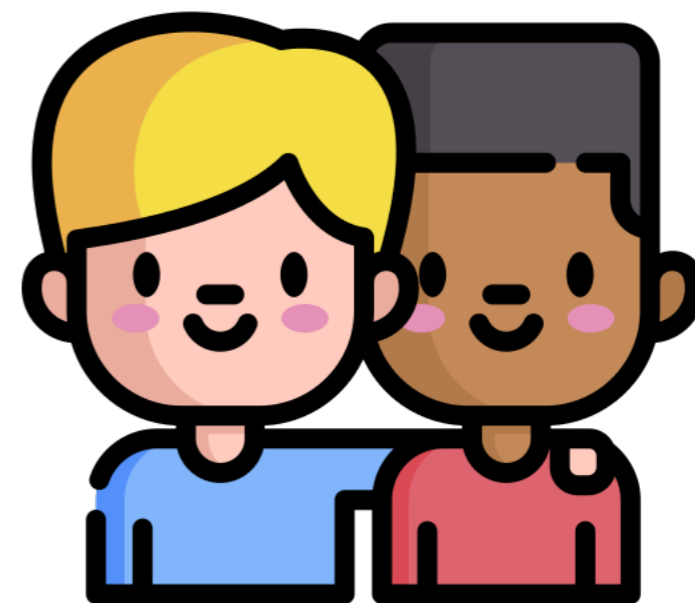
Pronunciation / Syllables

loyal
(loy-al)

Word Class
(adjective)

Definition:

Someone who is loyal remains firm in their friendship or support for a person or thing.



Tony was always very **loyal** to his best friend Rohan.

Synonym:

devoted
trustworthy

Antonym:

faithless
unreliable

Prefix / Suffix

dis-
-ty

Rhyme:

Royal

Link Word:

fiercely
always



Shinobi Word of the Day

Word of the Day:

Pronunciation / Syllables

peculiar
(pe-cu-liar)

Word Class
(adjective)

Definition:

If you describe someone or something as peculiar, you think that they are strange or unusual, sometimes in an unpleasant way.



The class thought Gandalf was a **peculiar** character.

Synonym:

curious

offbeat

Antonym:

common

ordinary

Prefix / Suffix:

-ly

Rhyme:

Link Word:

quite

seemed



Shinobi Word of the Day

Word of the Day:

repulsive
(re-pul-sive)

Word Class
(adjective)

Pronunciation / Syllables

Definition:

If you describe something or someone as repulsive, you mean that they are horrible and disgusting and you want to avoid them.



The smell from the bin in the classroom was **repulsive**.

Synonym:

hideous

revolting

Antonym:

delightful

attractive

Prefix / Suffix:

-ness

-ly

Rhyme:

impulsive

compulsive

Link Word:

socially

appears

Vocabulary Laboratory



Describe / Definition:

Use it in a sentence:

Focus Word (write below):

Word Class:

Synonyms:

(words with same / similar meaning)

Antonyms:

(words with opposite meaning)

Draw your sentence:

Rhymes:

(words that sound the same)

Link Words:

(Example: football = pitch, team, player)

Vocabulary Visualiser

Draw the
Grasshopper words
and bring them to life.



Word: hunger

Word: juggle

Word: leak

Word: knock



Vocabulary Visualiser

Draw the **Shinobi**
words and bring
them to life.



Word: frail

Word: peculiar

Word: loyal

Word: repulsive



Matching Meanings

Draw lines from the **Grasshopper** words to their definitions.



Grasshopper Word

Grasshopper Definitions

hunger

If you *** lots of different things, for example your work and your family, you try to give enough time or attention to all of them.



leak

*** is the feeling of weakness or discomfort that you get when you need something to eat.



juggle

When a solid substance *** or when you *** it, it changes to a liquid, usually because it has been heated.



melt

If you *** on something such as a door or window, you hit it, usually several times, to attract someone's attention.



knock

If a container ***, there is a hole or crack in it which lets a substance such as liquid or gas escape.



Matching Meanings

Draw lines from the **Shinobi** words to their definitions.

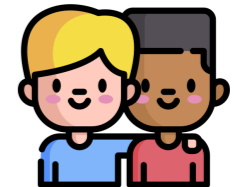


Shinobi Word

Shinobi Definitions

frail

Someone who is *** remains firm in their friendship or support for a person or thing.



introduce

To *** something means to cause it to enter a place or exist in a system for the first time.



loyal

If you describe someone or something as ***, you think that they are strange or unusual, sometimes in an unpleasant way.



peculiar

If you describe something or someone as ***, you mean that they are horrible and disgusting and you want to avoid them.



repulsive

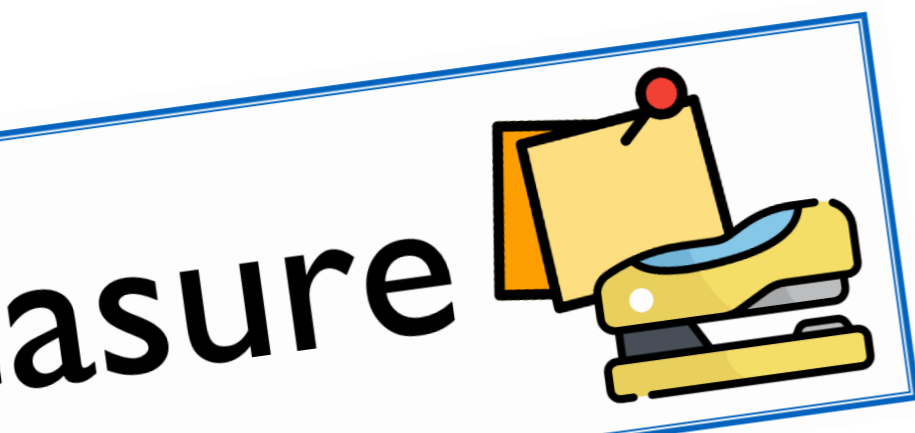
Something that is *** is easily broken or damaged.





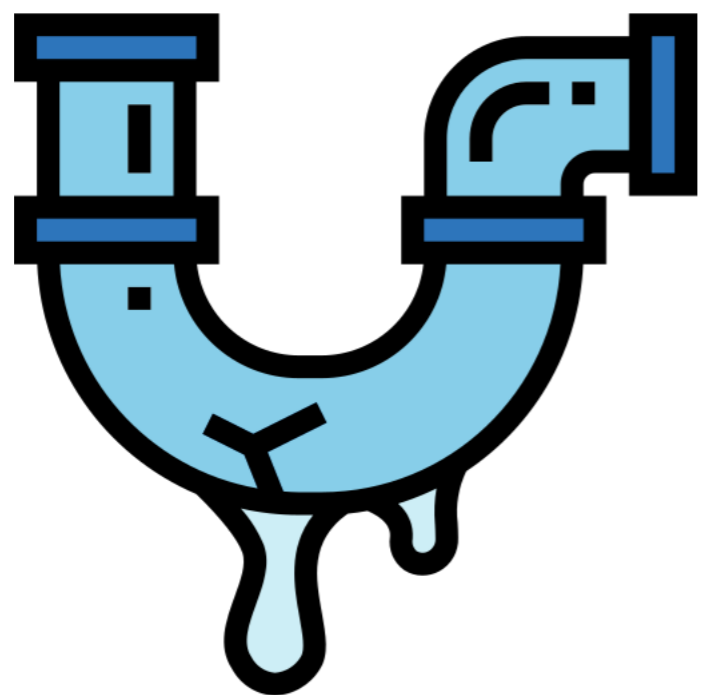
Display Slips

The following slides are for classroom display. As you teach each Word of the Day, words can be displayed in the classroom to enable pupils to use the taught vocabulary in an independent manner.





hunger

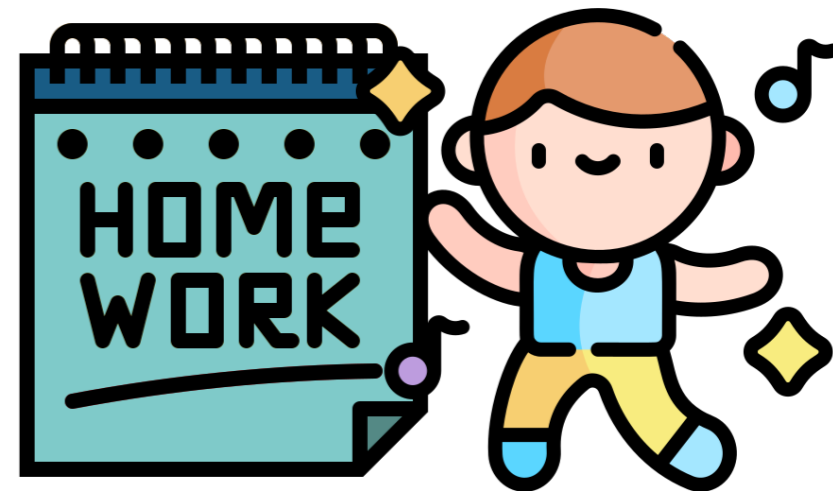


leak





juggle

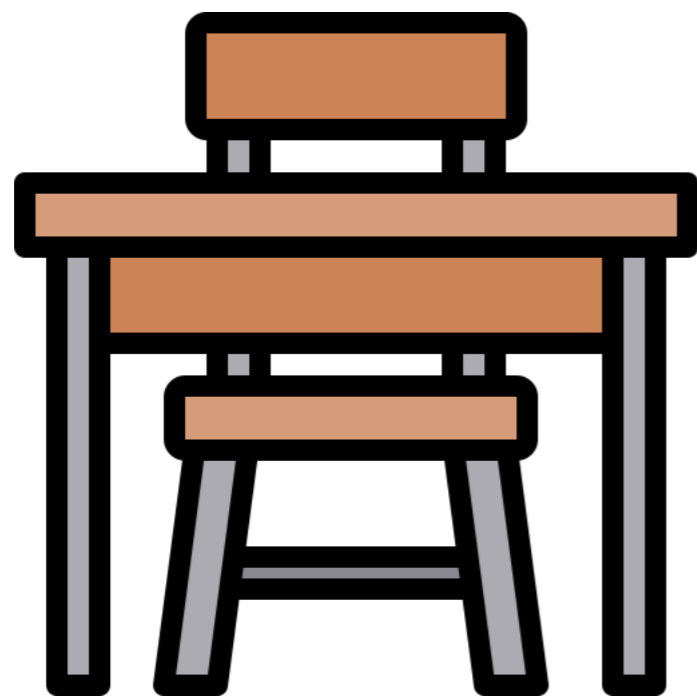


melt





knock

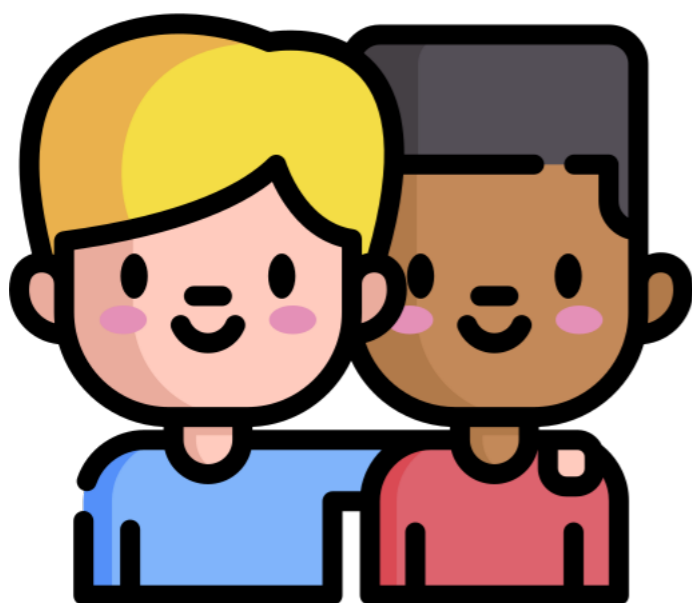


frail





introduce



loyal





peculiar



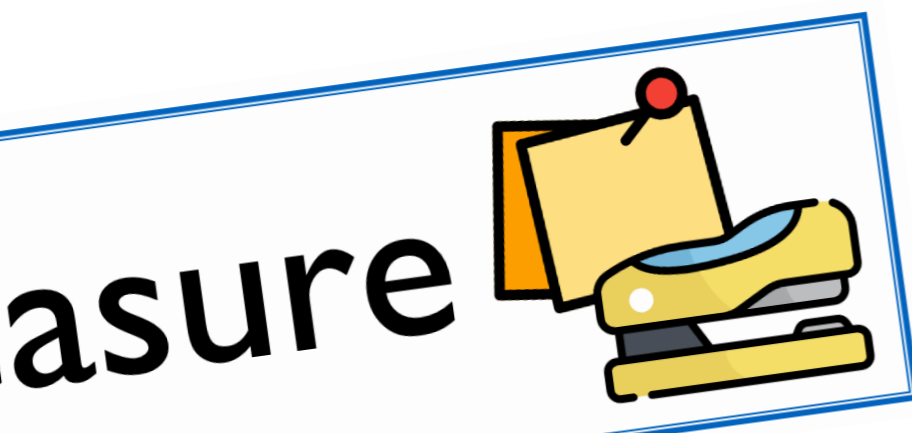
repulsive





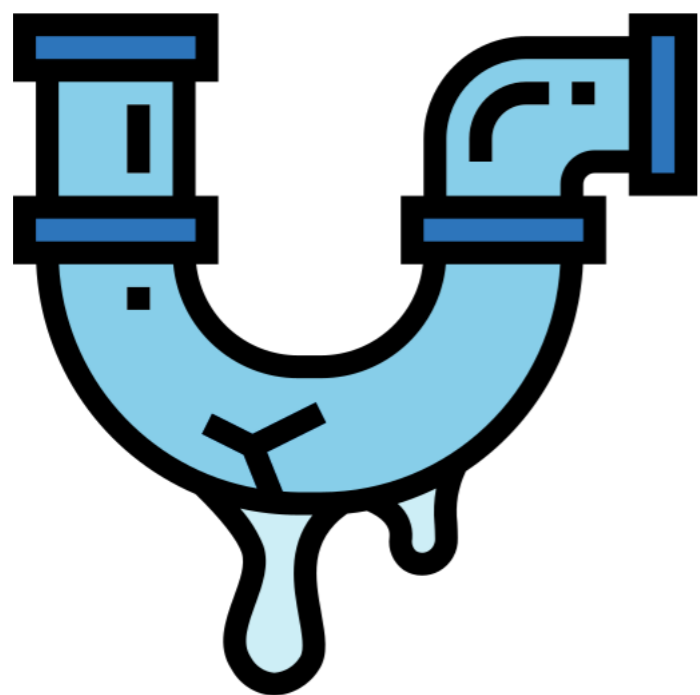
Font Variation

The following display slips contain the same words, but have a more regular font, which have a more regular formation of 'a' and 'g'. Futura is the name of the font.





hunger

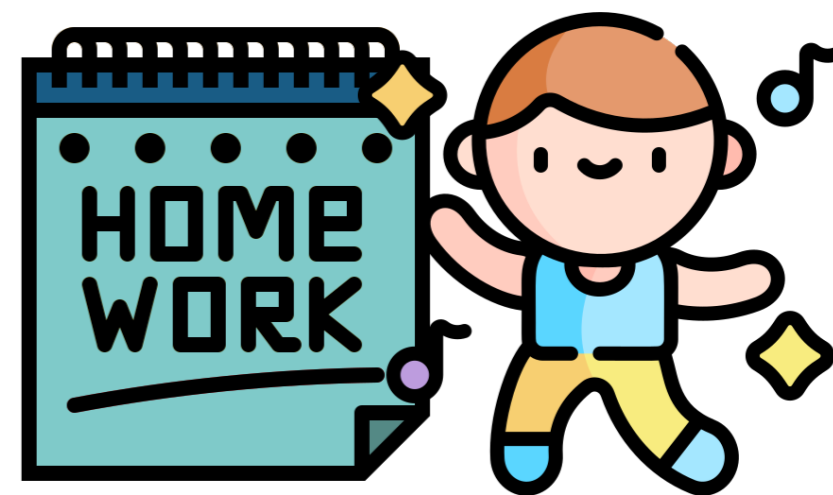


leak





juggle

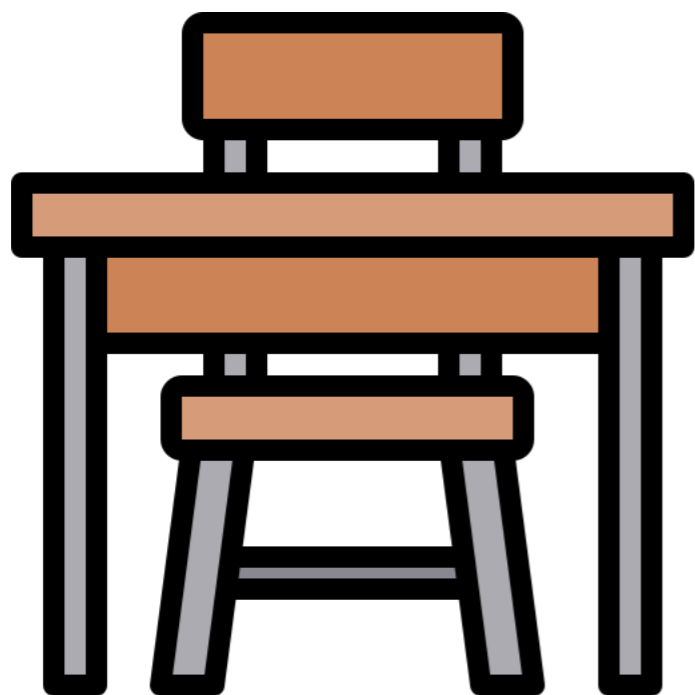


melt





knock

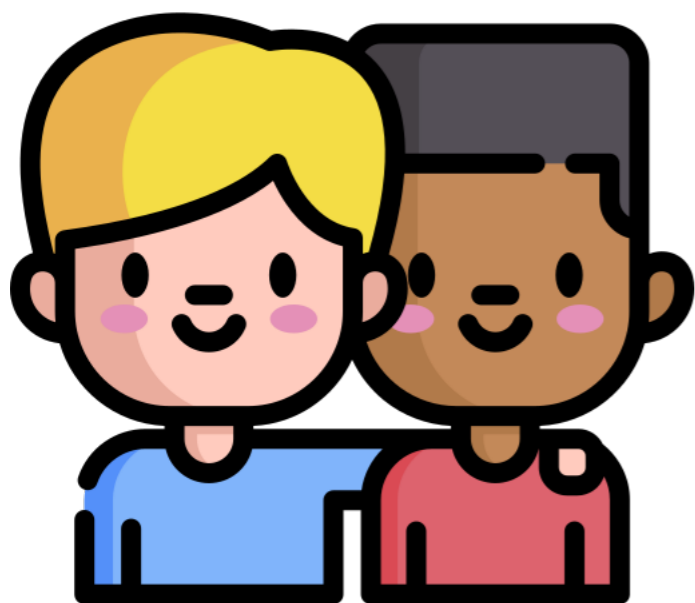


frail





introduce



loyal





peculiar



repulsive

